



NOVEMBER 2021

Connection

Regional Office of Education #21

Franklin, Johnson, Massac, Williamson Counties

Safety. Support. Success

Regional Office of Education #21

Lorie LeQuatte - Regional Superintendent of Schools
Mandy Horn - Assistant Regional Superintendent of Schools

Franklin County Office

Alison Cross - Accounting/Internal Control
Suzanne Willmore - Office Support
Heather Russell - Administrative Assistant
Luke Saeger - Truancy Interventionist

Williamson County Office

Johna Schullian - Comptroller/Director McKinney-Vento
Lisa Drury - Regional McKinney-Vento Liaison
Mickey Sullivan - Regional McKinney-Vento Liaison
Kate West - Director Community Prevention Resources (CPR)
Samantha Lampley - Project Manager CPR
Jeff Bink - Truancy Interventionist/ Health Life Safety
John Cox - Truancy Interventionist
Crystal Newcomb MSW - School Social Worker
Christine Wiggs Ph.D. - Professional Development
Roxanna Alldredge - Professional Development
Brittany Grove - Regional Communications Manager
Michelle Sears - Administrative Assistant
Kenlee Smith - Administrative Assistant
Chad Milburn - Network Specialist

Johnson County Office

Sheila Merideth - Office Support

Massac County Office

Jan Barrett - Office Support

PROJECT ECHO/STAR Quest Academy

Eddy Henriksen - Principal
Cortney Hale - Assistant Principal

Franklin County Regional Delivery System for CTE

Jan Farkas - Director
Nancy Kinsey - Assistant Director

Connect with us!



Please visit us on the web at
www.roe21.org

Lorie LeQuatte, Regional Superintendent
Mandy Horn, Assistant Superintendent

Retirement Announcement!

It is with regret but warm wishes that ROE #21 would like to announce the retirement of Sandra Hubbard, effective October 29, 2021. Sandy provided 28 years of dedicated service to the Regional Office of Education #21 in both Franklin and Williamson Counties.

Happy Retirement, Sandy!



Educators become students at Mt. Vernon Conference

The 42nd Annual Mt. Vernon Conference was held on October 29, 2021. This conference was made possible by generous support from ROE #13, ROE #21, and Franklin / Jefferson Special Education. The keynote speaker was Joel Katte. Joel has been a staff developer and speaker since 2013. His IGNITE #loveinschools professional experiences and keynotes instantly catapult school and district cultures to greater levels! Over a thousand educators from Southern Illinois attended this year's conference held at Mt. Vernon High School in Mt. Vernon, IL.

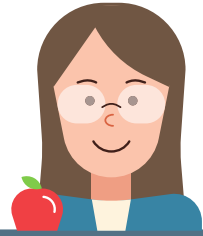


Educator Licensure

Professional Development Requirements

Beginning with the 2015 – 2020 renewal cycle, and every cycle thereafter, teachers and school support service personnel must complete **120 hours** of professional development to renew, regardless of the number or types of degrees held.

Acceptable Professional Development: Coursework from a regionally accredited Illinois College or University, National Board Certification, National Licenses (For School Support Personnel) and activities provided by an [Approved Illinois Professional Development Provider](#).



Community Resources

Supporting Child and Student Social, Emotional, Behavioral and Mental Health



The U.S. Department of Education published [Supporting Child and Student Social, Emotional, Behavioral and Mental Health Needs](#) a 100-page guide highlighting seven key challenges to providing school or program-based mental health support, along with seven corresponding recommendations. This resource includes many [real-world examples](#) of how the recommendations are being put into action by schools, communities, and states across the country, and the appendix includes a list of federal resource centers. Local school districts can use the resources in the American Rescue Plan's Elementary and Secondary School Emergency Relief program (ARP ESSER), as well as previous rounds of ESSER funds, to implement these recommendations.

Area VI Social Emotional Learning (SEL) Wellness



ROE #21 has partnered with ROE #12, #13, #20, and #30 for a Social Emotional Learning (SEL) Wellness Grant. The mission of this initiative is to ensure that districts, in partnership with social-emotional (SEL) and trauma coaches, will identify, develop, and implement a comprehensive plan to address the safety and well-being needs of students and staff.

Social Emotional Learning deliverables:

- Equity and inclusion shall be at the core of all activities
- Partner with local districts to assess SEL needs
- Partner with local districts to complete the TRS-IA Needs Assessment
- Participate in Communities of Practice opportunities
- Build the capacity of districts to meet the wellness needs of students and staff
- Provide all educators access to Coalition of Schools Educating Mindfully

View the SEL flyer here: <https://buff.ly/2Y9UwuQ>

Now
HIRING

Seeking
Employment?
You can now
find up to date
Employment
Opportunities
on our website
at:

<https://www.roe21.org/jobs/>

ROE21
Safety. Support. Success

Thankful
**FOR
EDUCATORS
LIKE YOU!**

National Parent Involvement Day November 18, 2021

Family Engagement Events and Activities for Schools!

Get Ready! The national celebrations of family engagement in schools - calls upon parents, grandparents and caring adults to assist teachers and staff with the day-to-day activities involved in providing a balanced education and nutrition for our students. Schools should engage parents, grandparents and caring adults as an important part of a team that strives to ensure that each and every student succeed.

- [150 Days of Family Engagement!](#)
- [Thank and Recruit Families](#)
- [Parent | School Checklist](#)
- [Ideas for Proclamations and Resolutions](#)
- [Purchase Project Appleseed's Parental Involvement Toolbox](#)



Project Appleseed
the national campaign for public school improvement

Get Your Team. It's About Teamwork! Working together with employers, employees, parents, mentors, and educators are key to creating a successful day that strengthens the connection between education and home, between parents and their children.

- [Parental Involvement Pledge Online](#)
- [The Parental Involvement Pledge.pdf](#)
- [The Parental Involvement Report Card.pdf](#)



American Education Week: November 15–19, 2021



American Education Week happens the week prior to the week of Thanksgiving. Each day has its own theme, during which we celebrate our public school community. Festivities honor the team of people who work in our nation's public schools, everyone from the bus driver and classroom teacher to the cafeteria worker and administrative staff, plus countless others. Celebrate public education and honor the individuals working to ensure that every student receives a quality education.

Monday, November 15- Kickoff Day: Familiarize students with American Education Week, including theme and celebration days.

Tuesday, November 16- Family Day: Schools across the nation invite parents into the classroom to experience what the day is like for their child.

Wednesday, November 17- Education Support Professionals Day: Honor and advocate for the Education Support Professionals who continue keeping students safe, healthy, and ready to learn.

Thursday, November 18- Educator for a Day: Community leaders are invited to experience the day as educators and experience the challenges of teaching and the needs of students, with the guidance of school employees.

Friday, November 19- Substitute Educators Day: Substitute educators play a vital role in the maintenance and continuity of daily education.

Find creative ideas for celebrating each day at:

<https://www.nea.org/resource-library/american-education-week-november-15-19-2021>

Upcoming Professional Development & Events

November 4, 2021
Principal Roundtable
Luncheon
(In person)

November 9, 2021
ROE 21 Advisory Board
Luncheon
(In Person)

November 9, 2021
Co-Teaching 101:
What They Teach You and What
They Don't
(Virtual)

November 10, 2021
Screencasting and Video Editing
with Screencastify & WeVideo
(Virtual)

November 15, 2021
Administrators' Academy #3700~
An Administrator's Guide to the
Fundamentals of HLS and
Compliance
(Virtual)

November 16, 2021
Short Term
Substitute Training
(In Person)

November 19, 2021
Social Emotional Learning
Dealing with Challenging
Behaviors
(In Person)

November 29, 2021
Cohort #4 Day 3
(Hybrid)

*Happy
Thanksgiving*

Please visit www.roe21.org
for additional information

Classroom Resources

Illinois Schoolyard Habitat Action Grant Deadline is November 30



Pollinator gardens, butterfly gardens, rain gardens, prairie gardens, tree arboretums, bird nesting boxes and bat roosting boxes are just some of the projects to benefit wildlife and learning that can be developed with an Illinois Schoolyard Habitat Action Grant. This is a program of the Illinois Department of Natural Resources' Division of Education. Funding is administered by the Illinois Conservation Foundation. Applications must be postmarked by November 30, 2021.

<https://www2.illinois.gov/dnr/education/Pages/GrantsSHAG.aspx>

Illinois Biodiversity Field Trip Grant Deadline is January 31, 2022



Taking your students on a field trip to study Illinois' natural resources can be a rewarding experience and it may be the first time that many of them have ever visited one of our state parks or natural areas. You can download the application form and instructions at

<https://www2.illinois.gov/dnr/education/Pages/GrantsIBFTG.aspx>.

Applications received by the preliminary deadline of January 15, 2022, will be reviewed for common errors that cause disqualification, and you will have a chance to revise any of these errors before the final application deadline of January 31, 2022. A program of the Illinois Department of Natural Resources' Division of Education, funding is administered by the Illinois Conservation Foundation.

Illinois Holocaust Museum & Education Center Confronting Hate Toolkit

In 2019, Illinois Holocaust Museum & Education Center received a 90% increase in inquiries from schools and individuals looking for support as they grapple with hate incidents. This toolkit is designed to share practical tools and resources that can be used immediately by administrators, educators, and parents who need to address hatred in their community. Often beginning with words, hatred can accelerate quickly when left unchecked. It is critical that those in positions of influence take these early warning signs seriously and intervene. Illinois Holocaust Museum is a committed resource in helping to build safe, inclusive, and caring communities. [DOWNLOAD THE CONFRONTING HATE TOOLKIT](#)



ILLINOIS HOLOCAUST MUSEUM
& EDUCATION CENTER

Student & Educator Programs



Franklin Co. Office

901 Public Square
Benton, IL. 62812
P: 618-438-9711
F: 618-435-2861

Johnson Co. Office

111 South 5th Street
P.O. Box 96
Vienna, IL. 62995
P: 618-658-3381

Massac Co. Office

1102 West 10th Street
Metropolis, IL. 62960
P: 618-524-3736
F: 618-524-7784

Williamson Co. Office

502 West Jackson Street
Marion, IL. 62959
P: 618-998-1283
F: 618-998-9226



Please note all
ROE #21 offices
will be **CLOSED** on
Veteran's Day
November 11, 2021
&
November 25 & 26, 2021
for Thanksgiving Break